

Beginning Improvisation for Classroom Guitar

Sponsored by Consonus Music
(cmilearn.org)

Improvisation

- We do it everyday



- A Language

- Learn it one word at a time

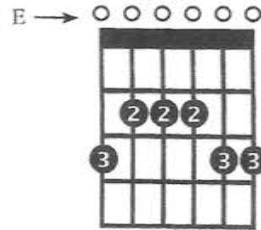


- Composition on the fly

**Start with the E minor
pentatonic scale. Use it to
improvise over a blues
progression in E.**

INTRODUCTION TO IMPROVISATION

BASIC E MINOR PENTATONIC SCALE



Play the E minor pentatonic scale while the chords to the following E blues progression are being played by another guitarist. Play the scale lowest notes to highest and then reverse it. The A7 chord in measure 2 and the B7 chord in measure 12 are optional. After playing the scale, mix up the notes in the scale while the E blues progression is being played. Keep the notes close to one another. Avoid large skips.

LESSON 26

1

E BLUES

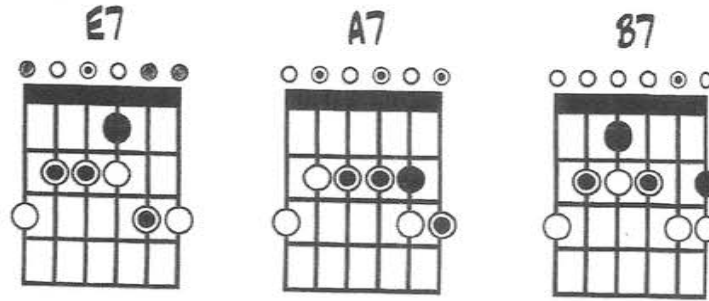
E7 (A7) E7 A7

7 E7 B7 A7 E7 (B7)

Find Chord Tones

Create a solo with one chord tone per measure. Keep the chord tones close to one another.

Location of chord tones over the scale:



2

One note per measure. Must be a chord tone.

Lesson 26

3

Write a similar solo as exercise 2 using one chord tone per measure.

**Use prescribed rhythms with
single-chord-tone solo.**

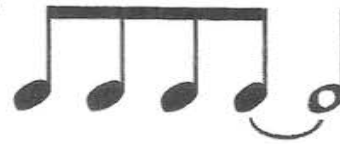
4

SAMPLE RHYTHMS

1.



2.



3.



4.



5

Solo containing one chord tone per measure and rhythm:

A guitar solo consisting of three staves of music. The first staff starts at measure 1 with an E7 chord and contains four measures of music. The second staff starts at measure 5 with an A7 chord and contains four measures of music. The third staff starts at measure 9 with a B7 chord and contains four measures of music. Chords are indicated above the staves: E7, A7, E7, A7, B7, A7, E7. Fingerings are indicated by numbers 0, 1, 2, 3. Rhythmic patterns include quarter notes, eighth notes, and triplets. A double bar line is at the end of the third staff.

Lesson 26



Use two chord tones per measure. Then, connect the chord tones with notes from the scale.

11 Solo containing various rhythms, multiple chord tones, and one scale tone:

Exercise 11 is a guitar solo in 4/4 time. It consists of three staves of music. The first staff starts with an E7 chord and contains four measures of music with fret numbers 0, 3, 0, 0, 3, 0, 3, 0, 0, 0, 3, 0, 0, 3, 3, 3, 0. The second staff starts with an A7 chord and contains four measures with fret numbers 2, 0, 0, 0, 3, 3, 0, 0, 0, 0, 3, 0, 0, 3, 3, 0. The third staff starts with a B7 chord and contains four measures with fret numbers 2, 2, 0, 0, 3, 2, 0, 2, 0, 0, 3, 0, 3, 0, 2, 0, 2, 0, 2, 2.

12 Solo with various rhythms, chord tones, and scale tones:

Exercise 12 is a guitar solo in 4/4 time, labeled as Lesson 26. It consists of four staves of music. The first staff starts with an E7 chord and contains four measures with fret numbers 0, 3, 0, 3, 3, 0, 0, 0, 3, 5, 5, 5, 0, 3, 0, 3, 3, 0, 3. The second staff starts with an A7 chord and contains four measures with fret numbers 2, 0, 2, 0, 2, 2, 2, 0, 2, 0, 2, 0, 2, 2, 2, 2, 2, 0, 2, 3, 2, 0, 2, 0. The third staff starts with an E7 chord and contains four measures with fret numbers 2, 0, 2, 0, 2, 3, 0, 0, 2, 0, 2, 2, 0, 2, 4, 0, 4, 0, 4, 0, 2. The fourth staff starts with an A7 chord and contains four measures with fret numbers 2, 0, 2, 0, 2, 0, 2, 2, 3, 0, 3, 0, 2, 0, 2, 0, 2, 2, 0, 2, 1, 0, 0.



**Throw in some common
licks.**

Call and Response

**Use half-step approaches to
chord tones.**